

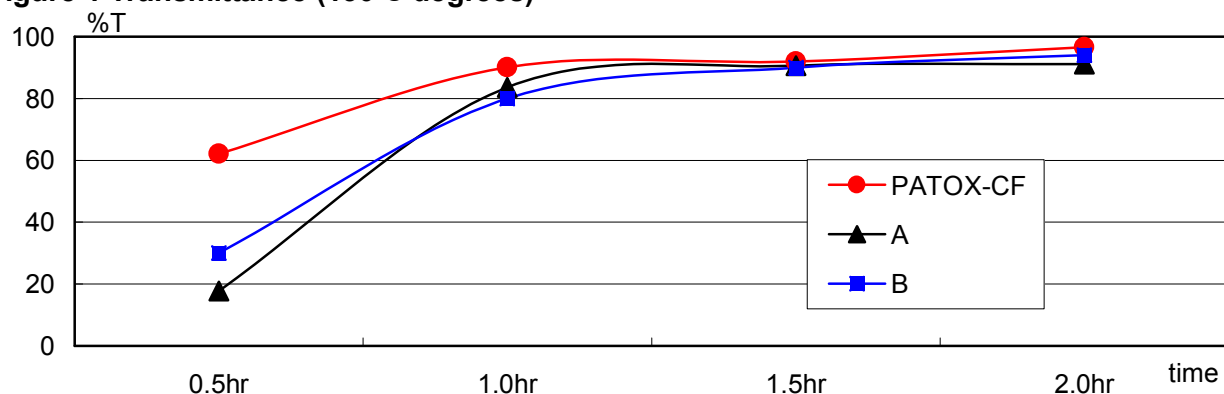
## Catalytic grade of Antimony trioxide “ PATOX-CF”

PATOX-CF is new type catalyst grade of antimony trioxide for the poly-condensation of PET. It is a high purity catalyst with very low content of impurities and a small particle size. This grade has an excellent solubility and a fast dissolution in ethylene glycol at low temperatures.

**Table .1 Analytical data**

	Sb <sub>2</sub> O <sub>3</sub> (%)	Pb (ppm)	As (ppm)	Fe (ppm)	SO <sub>4</sub> (ppm)	Particle size (μm)	Turbidity in conc. HCl (ppm)
<b>PATOX-CF</b>	<b>99.91</b>	<b>38</b>	<b>76</b>	<b>3</b>	<b>8</b>	<b>0.33</b>	<b>3.2</b>
A CORPORATION	99.89	118	125	5	5	0.58	5.8
B CORPORATION	99.87	102	173	11	25	0.39	7.1

**Figure 1 Transmittance (130 C degrees)**

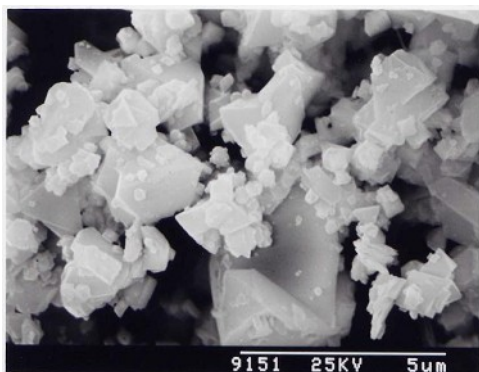


### Method

- 1) Sb<sub>2</sub>O<sub>3</sub> 3g + EG 150ml --> dissolution (oil-bath, temp, 130°C)
- 2) Transmittance measurement , wave length=475nm  
(UV-VISIBLE SPECTROPHOTOMETER UV-1600, SHIMADZU CORP.)

### SEM Photograph

Normal type catalyst grade "PATOX-C"



New type catalyst grade "PATOX-CF"



\* The statement and methods presented herein about the products are based upon the best available data and practices currently known to us. However they are neither presentations nor warranties of performance, results or comprehensiveness of such data, and further they do not imply any recommendation to infringe any patent or offer of a license under any license.



**Head Office** 3-2 Shimomiyabi-cho, Shinjuku-ku, Tokyo 162-0822, Japan  
 TEL 81-3-3235-0021 81-3-3235-0031 (Sales Department) FAX 81-3-5261-7335

**Osaka Branch** Daido Seimei South Building, 1-2-11 Edobori, Nishi-ku, Osaka 550-0002, Japan  
 TEL 81-6-7711-0120 FAX 81-6-7711-0121

**Nakase Refinery** 1198 Yoshii, Yabu-shi, Hyogo 667-1111, Japan  
 TEL 81-79-667-2121 FAX 81-79-663-5000